

# More

product data sheet

To transmit a sense of elegance and charm, without giving up the typically contemporary linearity of the forms and volumes: this is the philosophy of More, the new Sinetica offering dedicated to the Presidential environment. Important volumes and thicknesses characterize the desk, finished with a refined combination of precious woods, lacquered surfaces and leather coverings, created with artisanal quality and tailored cuts.

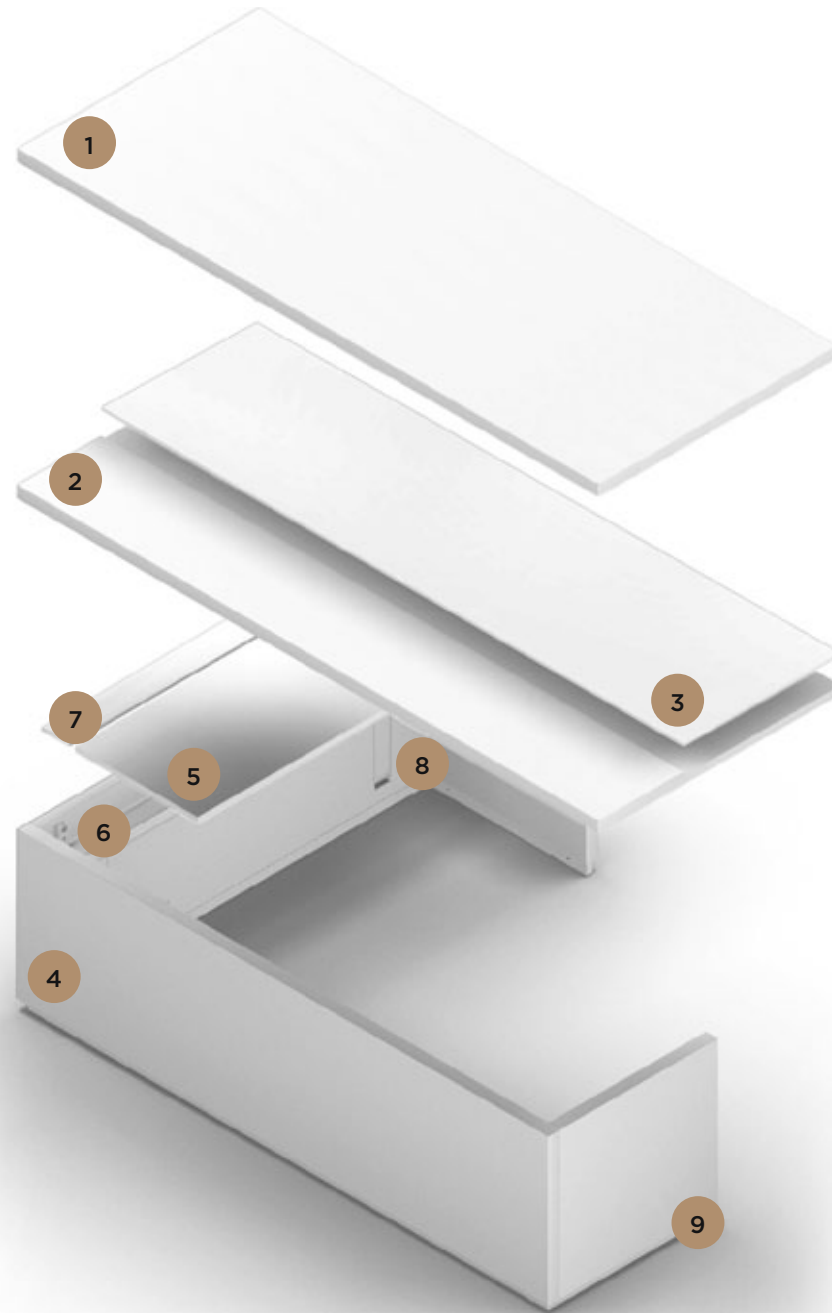
Completing the More Presidential office, the system of Directional Armoires and service tables, both coordinated with the desk in both design and aesthetic.



EXPLODED VIEW

LEGENDE

- 1. Desk top
- 2. Desk top for integrated pad
- 3. Leather pad
- 4. Structure
- 5. Peninsulas Desk
- 6. Cable tray
- 7. Top Access
- 8. Vertical wire management kit
- 9. Skirting



Right version

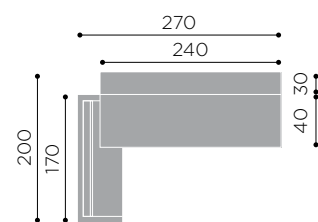
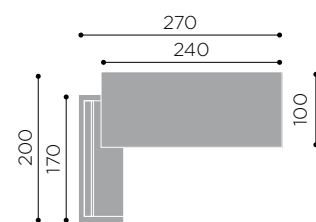


Left version



DIMENSIONS

TOP



STRUCTURE



TECHNICAL CHARACTERISTICS



DESK TOPS and STRUCTURE

**Veneer:** made with wood fiber panels, class E1, th. 51 mm and veneered with natural wood, oak and walnut finish, framed with a wooden edge with a thickness of 1.4 mm the same colour as the surface and coated with polycrylic matte finish varnish.

**Lacquered:** made with wood fiber panels, class E1, th. 50 mm and melamine ennobled, framed with ABS edges with a thickness of 2 mm, coated with polyurethane varnish. Matte or glossy finish.



DESK TOPS FOR LEATHER PAD

**Veneer:** made with wood fiber panels, class E1, th. 35 and 15 mm, glued together and veneered with natural wood, oak and walnut finish, framed with a wooden edge with a thickness of 1.4 mm the same colour as the surface and coated with polycrylic matte finish varnish.

**Lacquered:** made with wood fiber panels, class E1, th. 35 and 15 mm, glued together and melamine ennobled, framed with ABS edges with a thickness of 2 mm, coated with polyurethane varnish. Matte or glossy finish.



PENINSULAS DESK

**Veneer:** made with wood fiber panels, class E1, th. 26 mm and veneered with natural wood, oak and walnut finish, framed with a wooden edge with a thickness of 1.4 mm the same colour as the surface and coated with polycrylic matte finish varnish.

**Lacquered:** made with wood fiber panels, class E1, th. 25 mm and melamine ennobled, framed with ABS edges with a thickness of 2 mm, coated with polyurethane varnish. Matte or glossy finish.

**Leather / Eco-leather:** made with wood fiber panels, class E1, th. 25 mm and melamine ennobled, framed with ABS edges with a thickness of 2 mm, upholstered in leather/eco-leather.



INTEGRATED PAD

**Leather:** made with wood fiber panels, class E1, th. 14 mm and melamine ennobled, framed with ABS edges with a thickness of 1 mm, upholstered in leather. Secured to the top using screws and bushings.

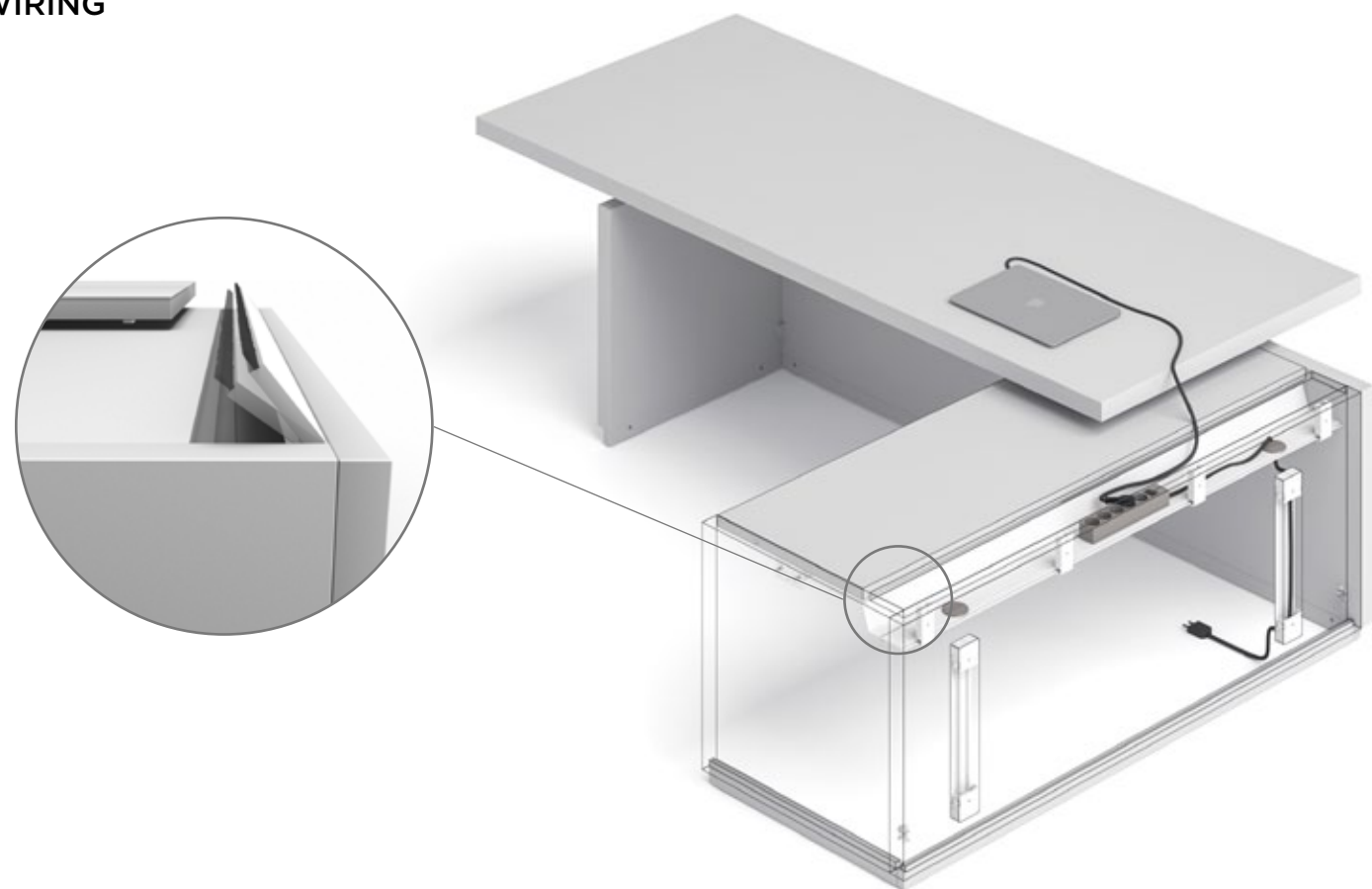
**Eco-leather:** made with wood fiber panels, class E1, th. 14 mm and melamine ennobled, framed with ABS edges with a thickness of 1 mm, upholstered in faux leather. Secured to the top using screws and bushings.



SKIRTING

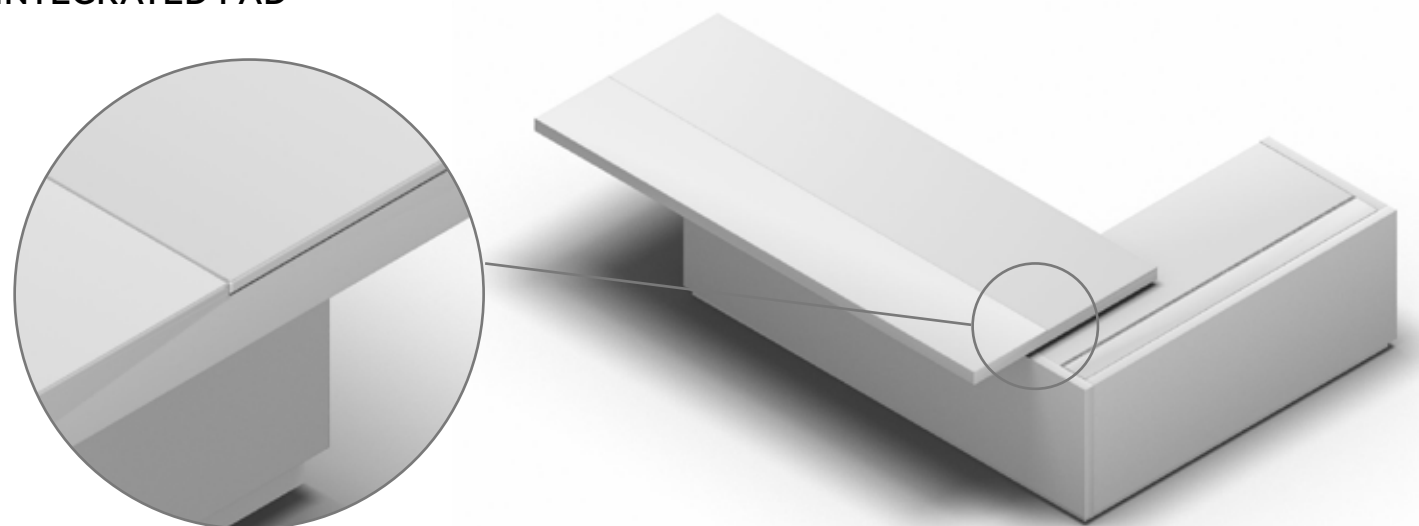
At the bottom, the panels rest on bases made of MDF with a thickness of 25 mm; they are coated with polyurethane varnish and attached to the structure by means of wedges and slots.

WIRING



By opening the top access on the peninsula, you can access a wire compartment, made of extruded aluminium with a thickness of 2.1 mm, Prof. 130 mm H.60 mm with an epoxy finish: it is suitable for arranging cables and power strips and it is equipped with two cable glands in correspondence with the channels mounted on the front panel of the peninsula: they are made of metal with an epoxy finish and they have a useful compartment of 60x26 mm.

INTEGRATED PAD



The particular construction of the tops creates a pattern of thicknesses, which allows to add a leather/faux leather blotter to the top.  
**Leather:** made with wood fiber panels, class E1, th. 14 mm and melamine ennobled, framed with ABS edges with a thickness of 1 mm, upholstered in leather. Secured to the top using screws and bushings.  
**Eco-leather:** made with wood fiber panels, class E1, th. 14 mm and melamine ennobled, framed with ABS edges with a thickness of 1 mm, upholstered in faux leather. Secured to the top using screws and bushings.

EXECUTIVE CABINETS

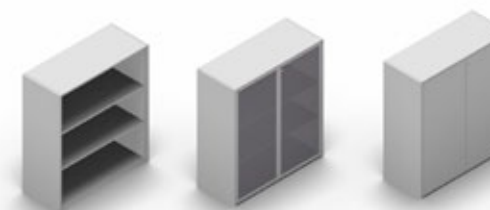
H. 79,5



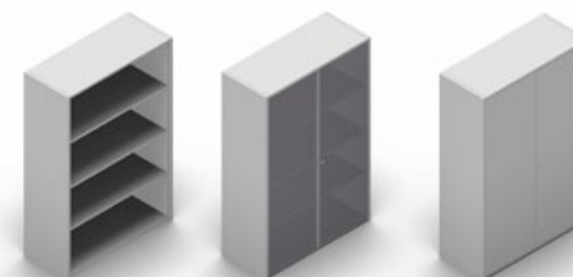
H. 103



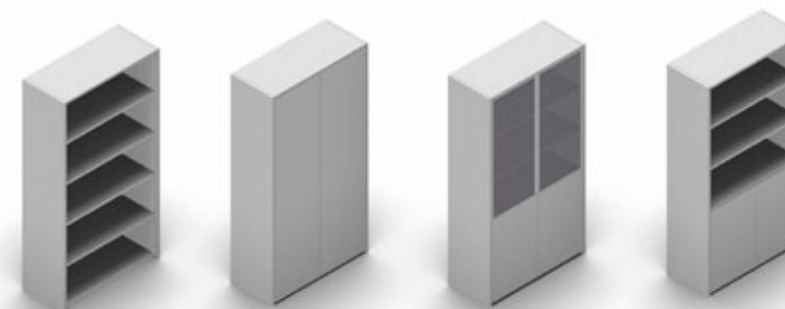
H. 118



H. 156,5



H. 195



**Wooden frame and tops:** made with wood fiber panels, class E1, th. 39mm and veneered with natural wood, oak and walnut finish, framed with a wooden edge with a thickness of 1.4mm the same colour as the surface and coated with polycrylic matte finish varnish.

**Lacquered frame and tops:** made with wood fiber panels, class E1, th. 38mm and melamine ennobled, framed with ABS edges with a thickness of 2mm, coated with polyurethane varnish. Matte or glossy finish.

**Leather tops:** made with wood fiber panels, class E1, th. 38mm and melamine ennobled, framed with ABS edges with a thickness of 2mm. Upholstered in leather.

**Faux leather tops:** made with wood fiber panels, class E1, th. 38mm and melamine ennobled, framed with ABS edges with a thickness of 2mm. Upholstered in faux leather.

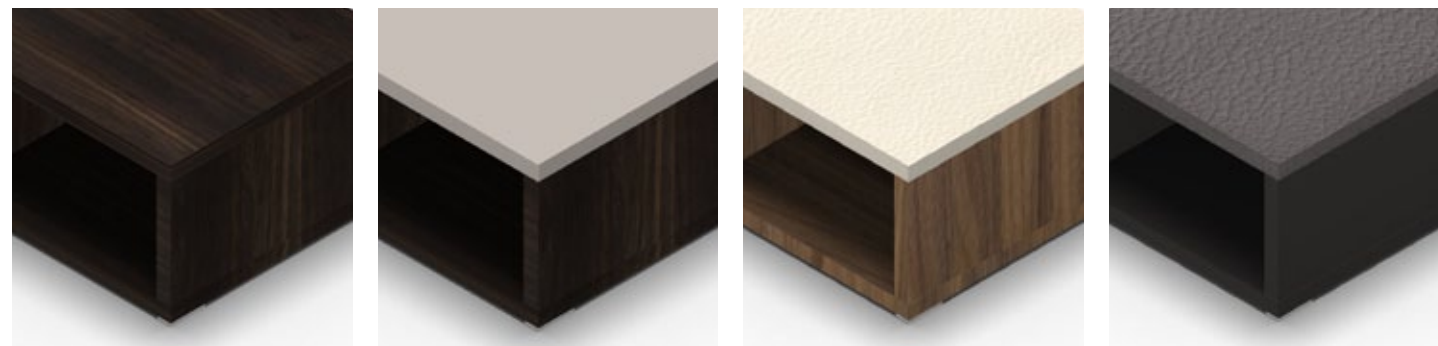


CAFFEE TABLES



**Wooden frame and tops:** made with wood fiber panels, class E1, th. 39mm and veneered with natural wood, oak and walnut finish, framed with a wooden edge with a thickness of 1.4mm the same colour as the surface and coated with polycrylic matte finish varnish.  
**Lacquered frame and tops:** made with wood fiber panels, class E1, th. 38mm and melamine ennobled, framed with ABS edges with a thickness of 2mm, coated with polyurethane varnish. Matte or glossy finish.  
**Leather tops:** made with wood fiber panels, class E1, th. 38mm and melamine ennobled, framed with ABS edges with a thickness of 2mm. Upholstered in leather.  
**Faux leather tops:** made with wood fiber panels, class E1, th. 38mm and melamine ennobled, framed with ABS edges with a thickness of 2mm. Upholstered in leather.

FINISHES COMBINATIONS OF CAFFEE TABLES



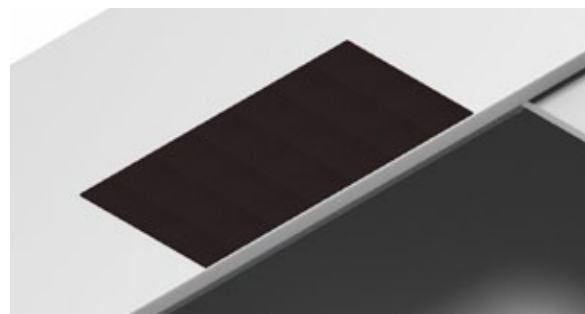
**TOP** cooked oak  
**STRUCTURE** cooked oak

**TOP** dove-grey lacquered  
**STRUCTURE** cooked oak

**TOP** cream leather  
**STRUCTURE** walnut canaletto

**TOP** dark grey leather  
**STRUCTURE** lead lacquered

PAD



**Leather desk pad:** interior steel support, thk. 0.8 mm, upholstered in leather.  
**Eco-leather desk pad:** interior steel support, thk. 0.8 mm, upholstered in eco-leather.

FINISHES COMBINATIONS



**TOP** walnut canaletto  
**STRUCTURE** dove-grey lacquered  
**EXTENSION** dove-grey lacquered

**TOP** walnut canaletto  
**STRUCTURE** white lacquered  
**EXTENSION** walnut canaletto

**TOP** walnut canaletto  
**PAD** dove-grey leather  
**STRUCTURE** walnut canaletto  
**EXTENSION** dove-grey leather



**TOP** cooked oak  
**STRUCTURE** cooked oak  
**EXTENSION** lead-grey lacquered

**TOP** cooked oak  
**PAD** dark grey leather  
**STRUCTURE** cooked oak  
**EXTENSION** cooked oak

**TOP** cooked oak  
**STRUCTURE** cooked oak  
**EXTENSION** cooked oak



**TOP** cement-grey lacquered  
**STRUCTURE** cooked oak  
**EXTENSION** cement-grey lacquered

**TOP** dove-grey lacquered  
**PAD** dark grey leather  
**STRUCTURE** dove-grey lacquered  
**EXTENSION** dove-grey lacquered

**TOP** cement lacquered  
**PAD** black leather  
**STRUCTURE** cement lacquered  
**EXTENSION** black leather

**FINISHES**

TOPS - STRUCTURE - EXTENSION

**VENEER**



RC  
COOKED OAK

NO  
WALNUT  
CANALETTO

**PRESTIGE LACQUERED**



NCS S 0502 Y  
WHITE

NCS S 4005 Y50R  
DOVE-GREY

NCS S 5502 R  
CEMENT-GREY

NCS S 7502 R  
LEAD-GREY

EXTENSION - PAD

**LEATHER** - Real Bovine Finished Leather. Corrected Grain Consistency. Madras Grain.



03  
CREAM

25  
DOVE-GREY

20  
DARK GREY

02  
BLACK

**ECO-LEATHER** - 76%Pvc ; 2% Polyurethane ; Support 22% Polyester. Flammability 11m class.



03  
CREAM

28  
BEIGE

24  
GREY

02  
BLACK

**CERTIFICATIONS**

**ENVIRONMENT**

The main Sinetica target is to consider the environment respect as main part of its activity . For this reason Sinetica has decided to use an Environmental Management System (SGA) compliant with the UNI EN ISO 14001:2004



Cert. n° 7672 Certificazione ISO 14001

**QUALITY**

Sinetica production is followed by the Sinetica technician team in all production phases ,they verify and assure the adequate technologic development ,the engineering and quality , trying to meet the final customer needs and his expectation with the utilized industrial processes. Every production phase is daily pointed out: from the study and the choice of the raw materials, to production and the services supplied.

Sinetica has a Quality Company System that is compliant with UNI EN ISO 9001:2008 obtaining and maintaining the Certification from an accredited Organism.



Cert. n° 7672 Certificazione ISO 9001

**FSC**

Furthermore Sinetica, in order to protect the environment and the ethical values in which believes , has obtained an international standard certification FSC (FOREST STEWARDSHIP COUNCIL) which is a warranty for the final customer that the product bought is coming directly or indirectly from certified forests.



**FIRE BEHAVIOUR**

According to regulations EN 13501-1 CLASSIFICATION D-S2, D0.